

Predict | Protect | Prevent

ARCON|PAM

ARCON PAM Plugin

Table of Contents

1	Overview	3
1.1	Pre-requisites	3
1.2	Limitations	3
1.3	ARCON PAM Plugin Installation.....	3

1 Overview

The new ARCON PAM Plugin supports all major browsers Internet Explorer v10 & above, Mozilla Firefox V55 & above, and Google Chrome V69 & above on Windows for browser independency. To use ARCON PAM application on all browsers, user shall install ARCON PAM Plugin on his/her system.

1.1 Pre-requisites

N.A.

1.2 Limitations

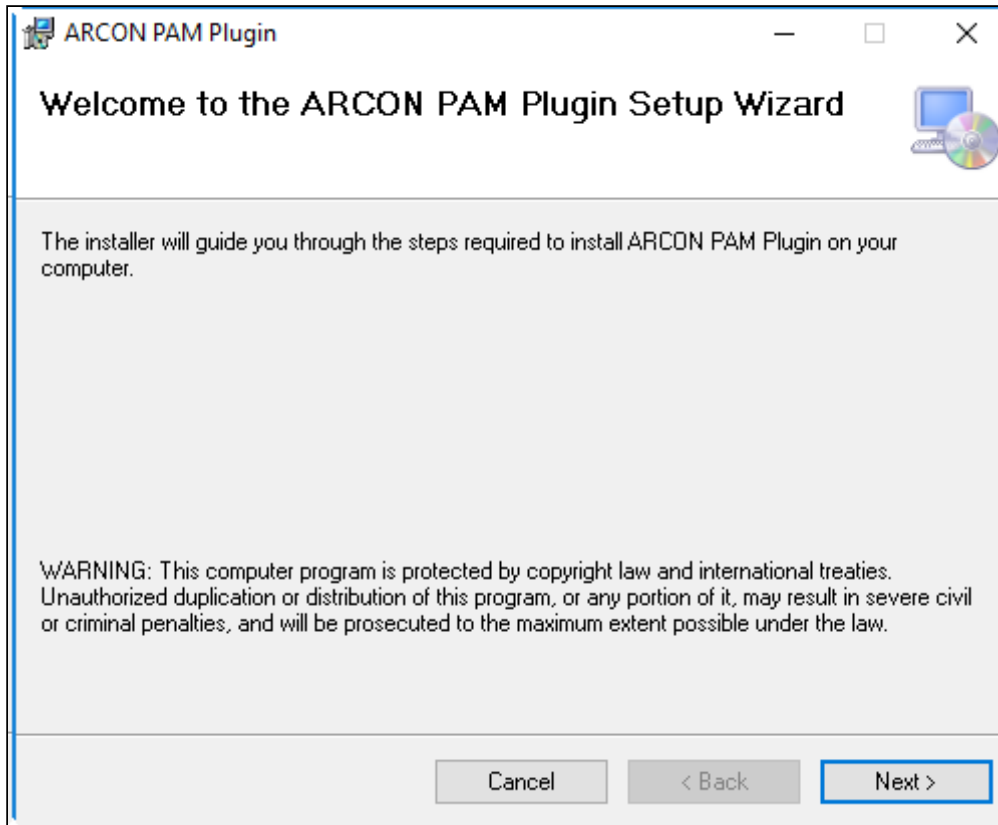
ARCON PAM Plugin supported only by Windows OS.

1.3 ARCON PAM Plugin Installation

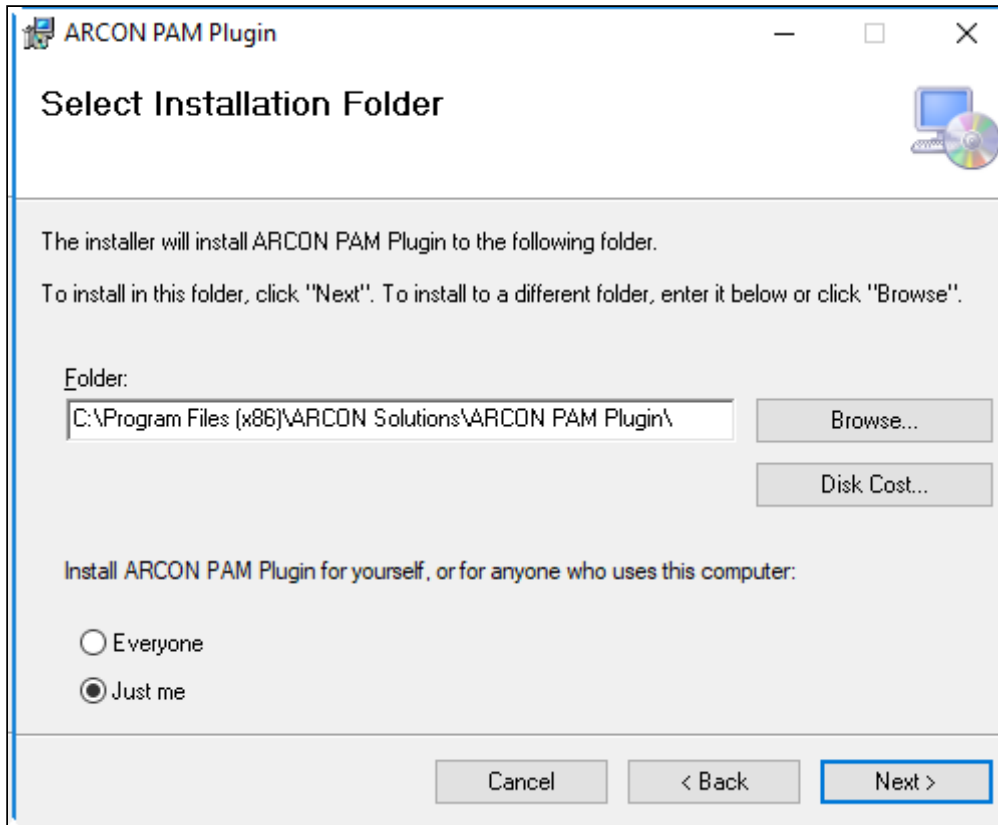
1. The Product Team will share **ARCON PAM Plugin Setup.msi** file.



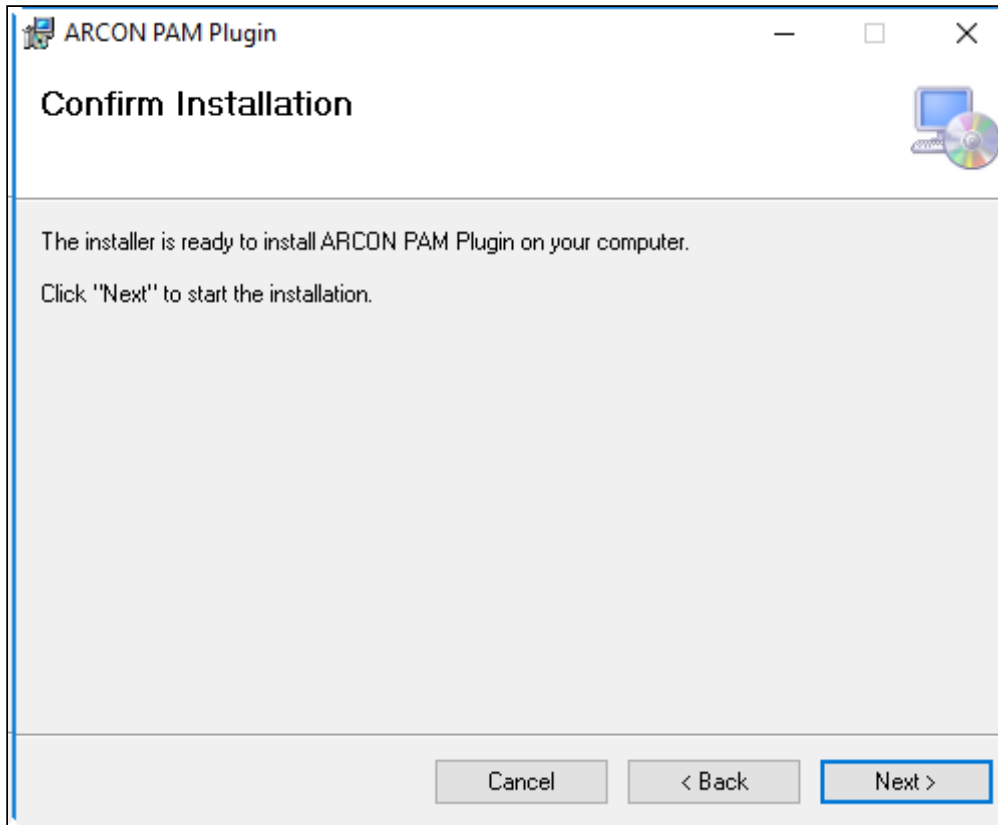
2. Double click on **ARCON PAM Plugin Setup.msi** file. The **ARCON PAM Plugin** screen is displayed.



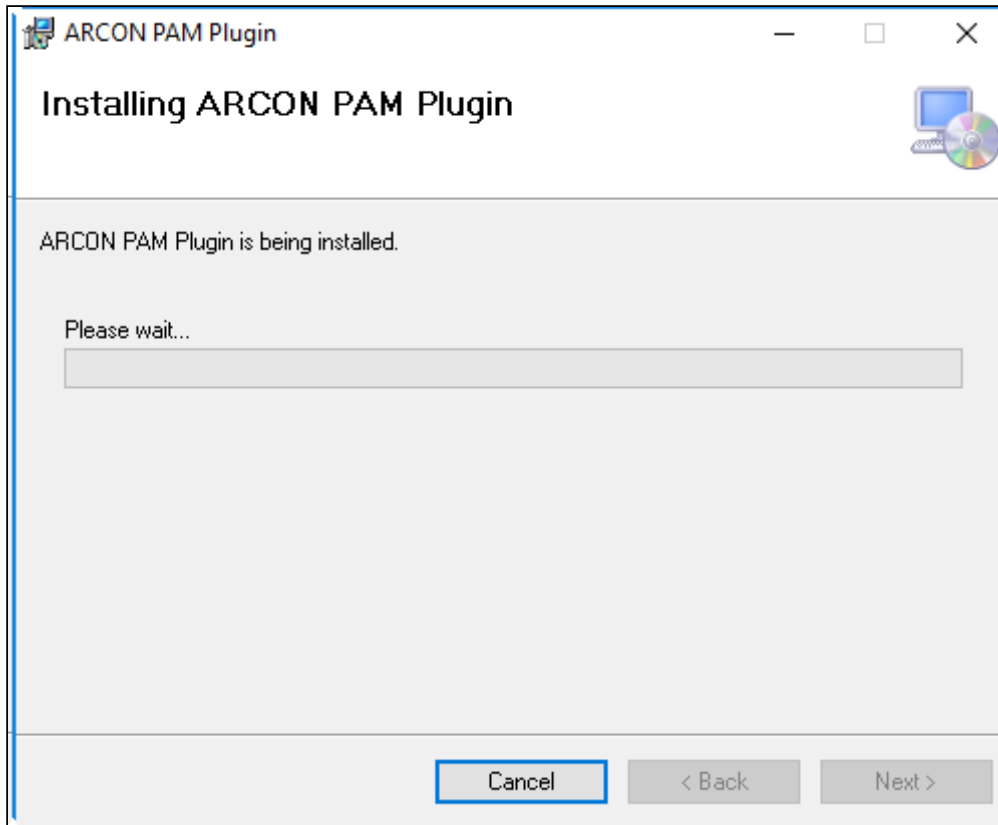
3. Click **Next**. Browse and Select the required folder.



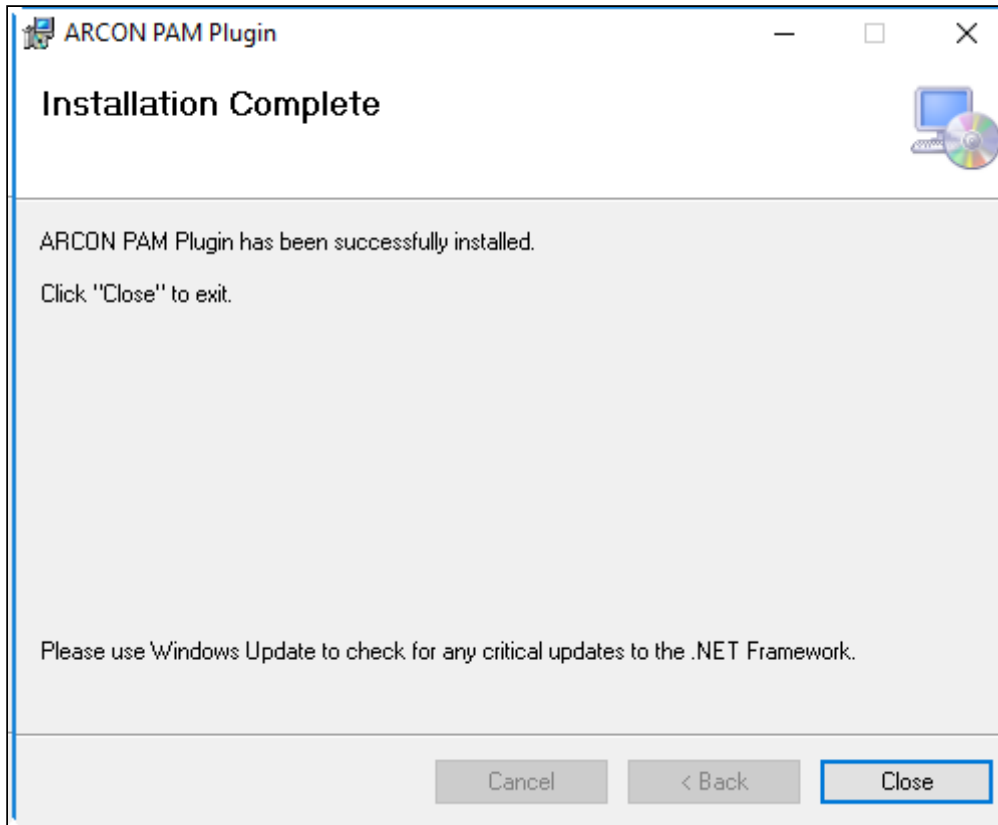
4. Click **Next**. The installer is ready to install ARCON PAM Plugin on your computer.



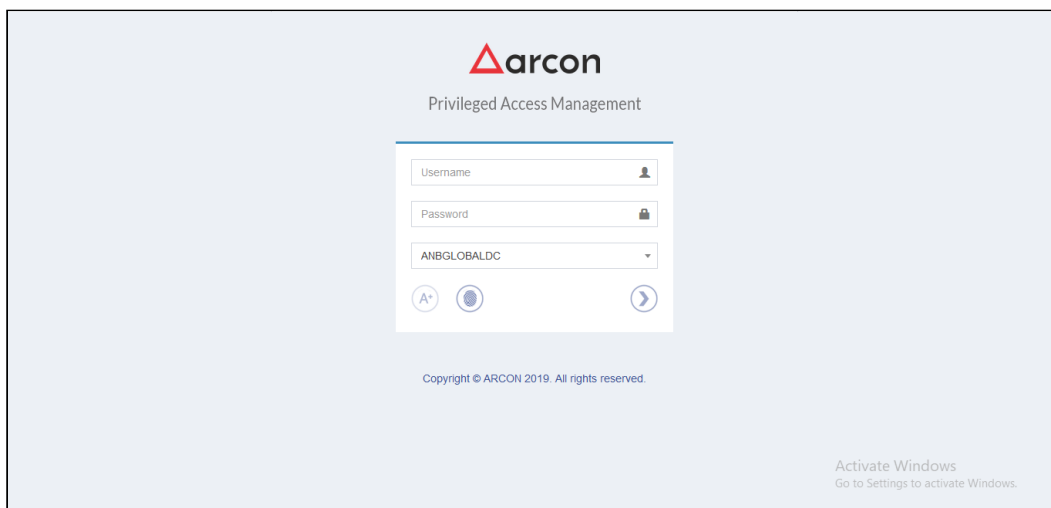
5. Click **Next** to start the installation.




6. ARCON PAM Plugin is being installed.



- 7. ARCON PAM Plugin has been successfully installed.
- 8. Once the Plugin is installed on the system, User will be able to launch ARCON PAM URL from all the major browsers.

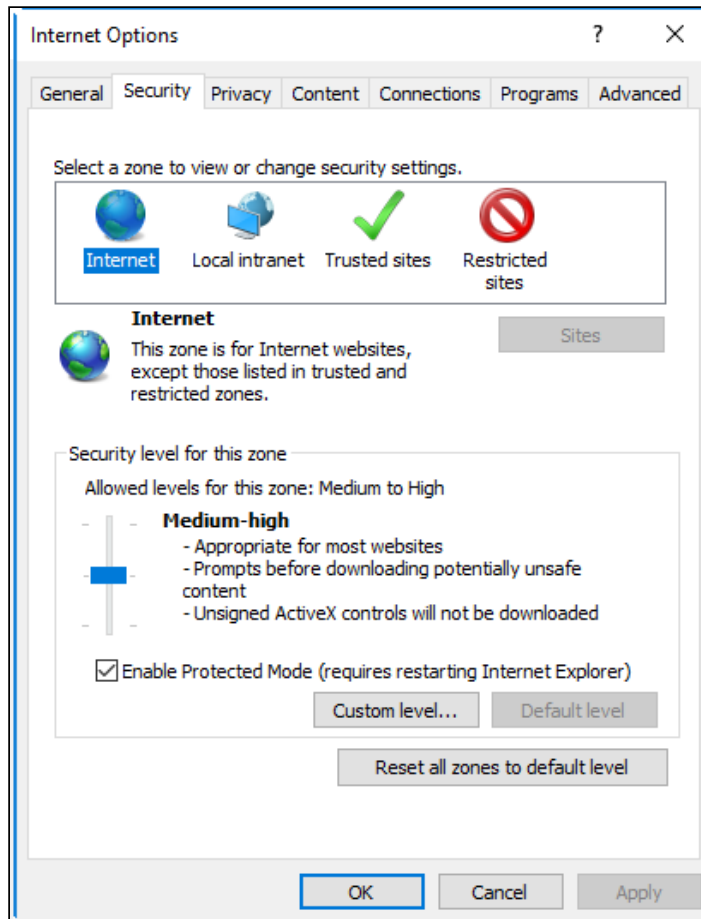


 User using Internet Explorer browser shall configure the below **Internet Options Security** settings whereas for Chrome and Firefox, there is no need for any browser settings.

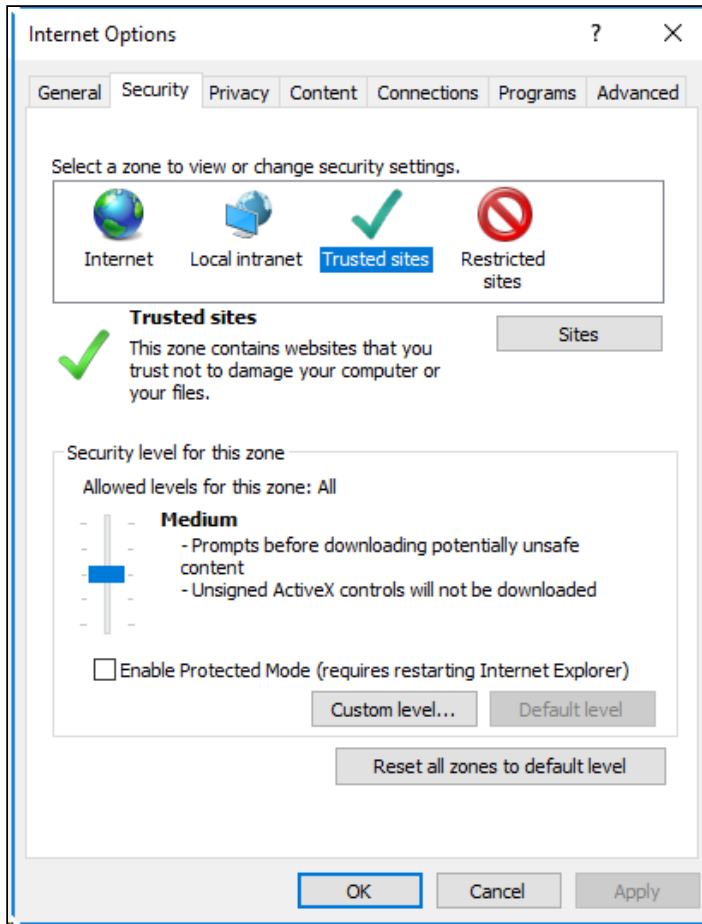
Internet Explorer Settings

Setting 1:

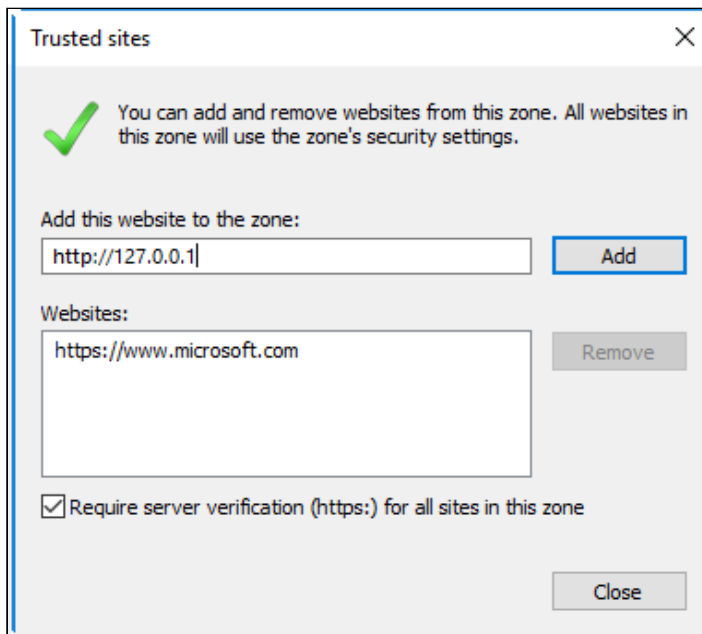
1. Go to **Internet Options** → **Security tab**



2. Select **Trusted sites** icon. The **Sites** button is enabled.



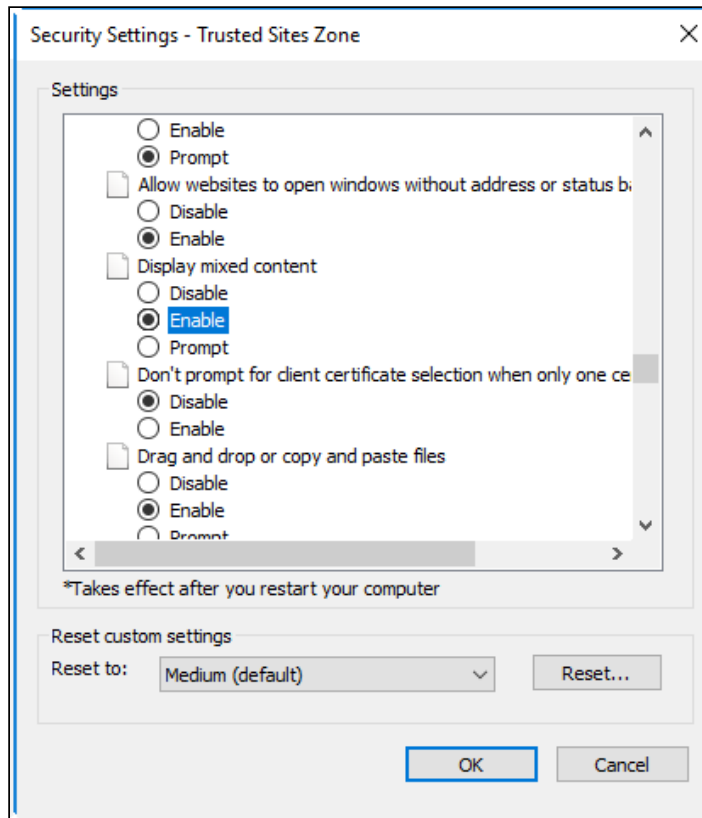
3. Click **Sites**. The **Trusted sites** pop up is displayed.



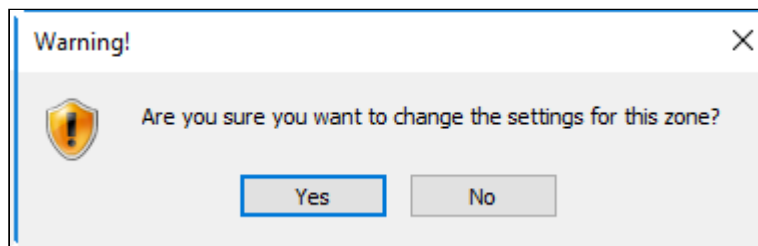
4. Enter the required URL and click **Add**, to add the website to the secured zone.

Setting 2:

1. Go to **Internet Options** → **Security tab** → **Custom Level** → Go to **Miscellaneous**



2. Select **Enable** radio button from **Display mixed content** option. A pop up is displayed.



3. Click **Yes**, to change the settings for the zone.

Privileged Access Management Suite

